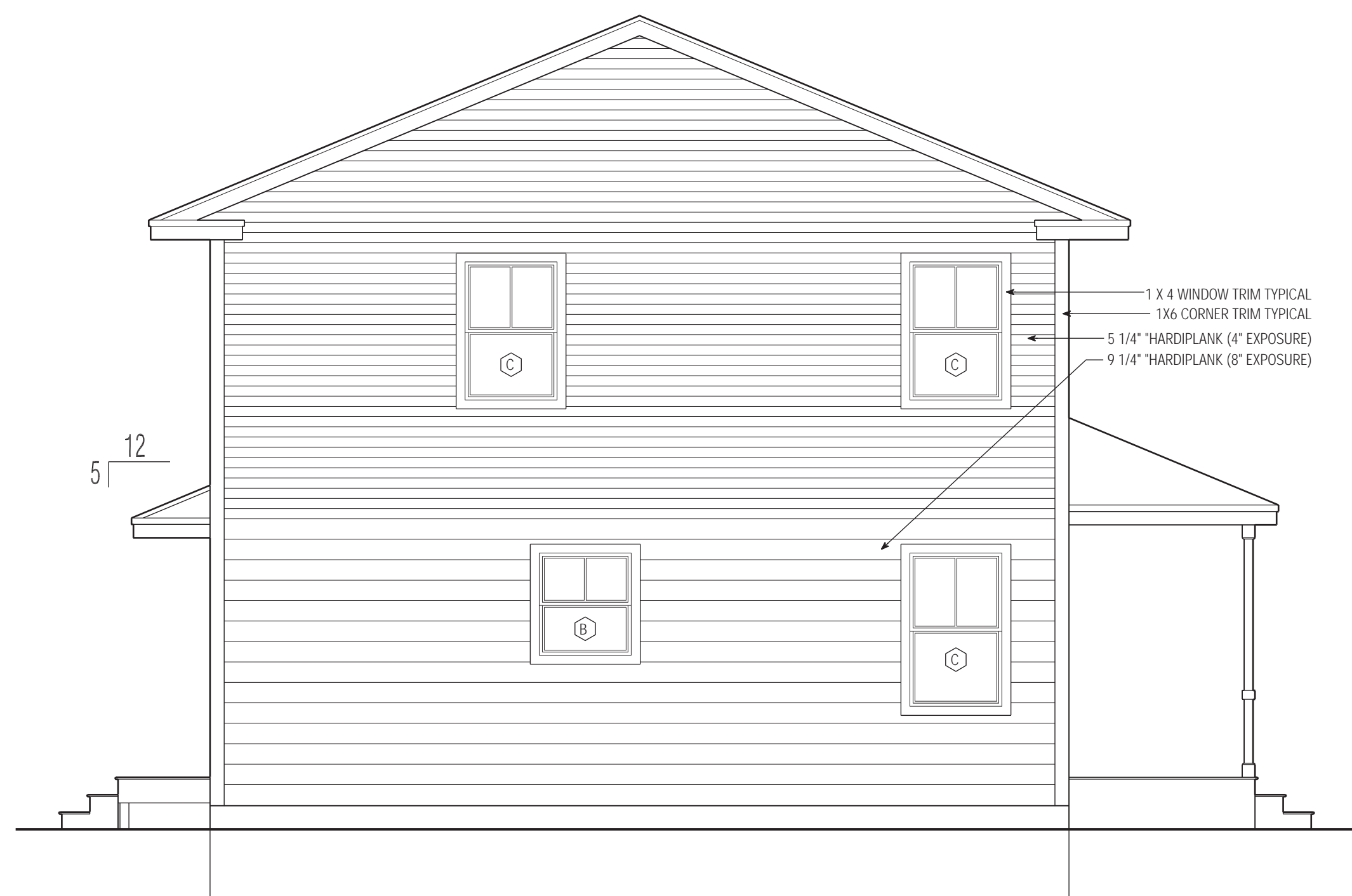


5 | RIGHT SIDE ELEVATION
SCALE 1/4" = 1'-0"



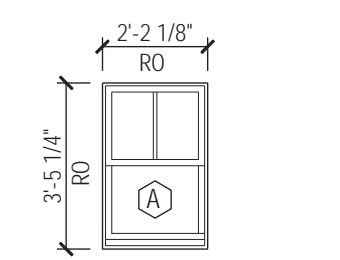
3 | REAR ELEVATION
SCALE 1/4" = 1'-0"



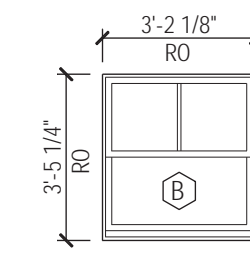
4 | LEFT SIDE ELEVATION
SCALE 1/4" = 1'-0"



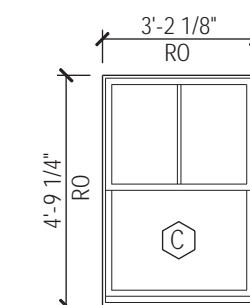
2 | FRONT ELEVATION
SCALE 1/4" = 1'-0"



2032
TILT WASH DOUBLE HUNG
2'-1 5/8" X 3'-5 1/4" UD



3032
TILT WASH DOUBLE HUNG
3'-1 5/8" X 3'-5 1/4" UD



3046
TILT WASH DOUBLE HUNG
3'-1 5/8" X 4'-9 1/4" UD
(MEETS EGRESS REQUIREMENTS)

- ALL WINDOWS TO BE "ANDERSEN" (STYLES AND SIZES AS NOTED ABOVE)
- ALL WINDOWS TO BE WHITE IN COLOR
- ALL WINDOWS TO BE COMPLETE WITH WHITE GRILLES, INSECT SCREENS, AND ALL REQUIRED HARDWARE (WHITE) TO PROPERLY OPERATE AND LOCK THE UNIT
- EVERY SLEEPING ROOM TO HAVE AT LEAST ONE OPERABLE WINDOW WITH A MINIMUM NET CLEAR OPENING OF 5.7 SQ FT WITH MINIMUM HEIGHT OF 24" AND MINIMUM WIDTH OF 20" AND SILL LOCATED LESS THAN 44" ABOVE FINISHED FLOOR

1 | WINDOW SCHEDULE
SCALE 1/4" = 1'-0"

1/22/01 SUBMITTED FOR REVIEW

BUILDING SCIENCE CORPORATION
AND BETSY PETTIT ARCHITECTS
70 MAIN STREET WESTFORD, MASSACHUSETTS 01886
P: 978-589-5100 F: 978-589-5103

HABITAT FOR HUMANITY
METRO DENVER
13TH AVENUE AND NELSON STREET, LAKE WOOD CO

BUILDING ELEVATIONS
WINDOW SCHEDULE
HOUSE 2
SCALE AS NOTED

COPYRIGHT © 2001
BUILDING SCIENCE CORPORATION

A-7

FILE: HJ_WDR_00b_DRAWING.dwg

