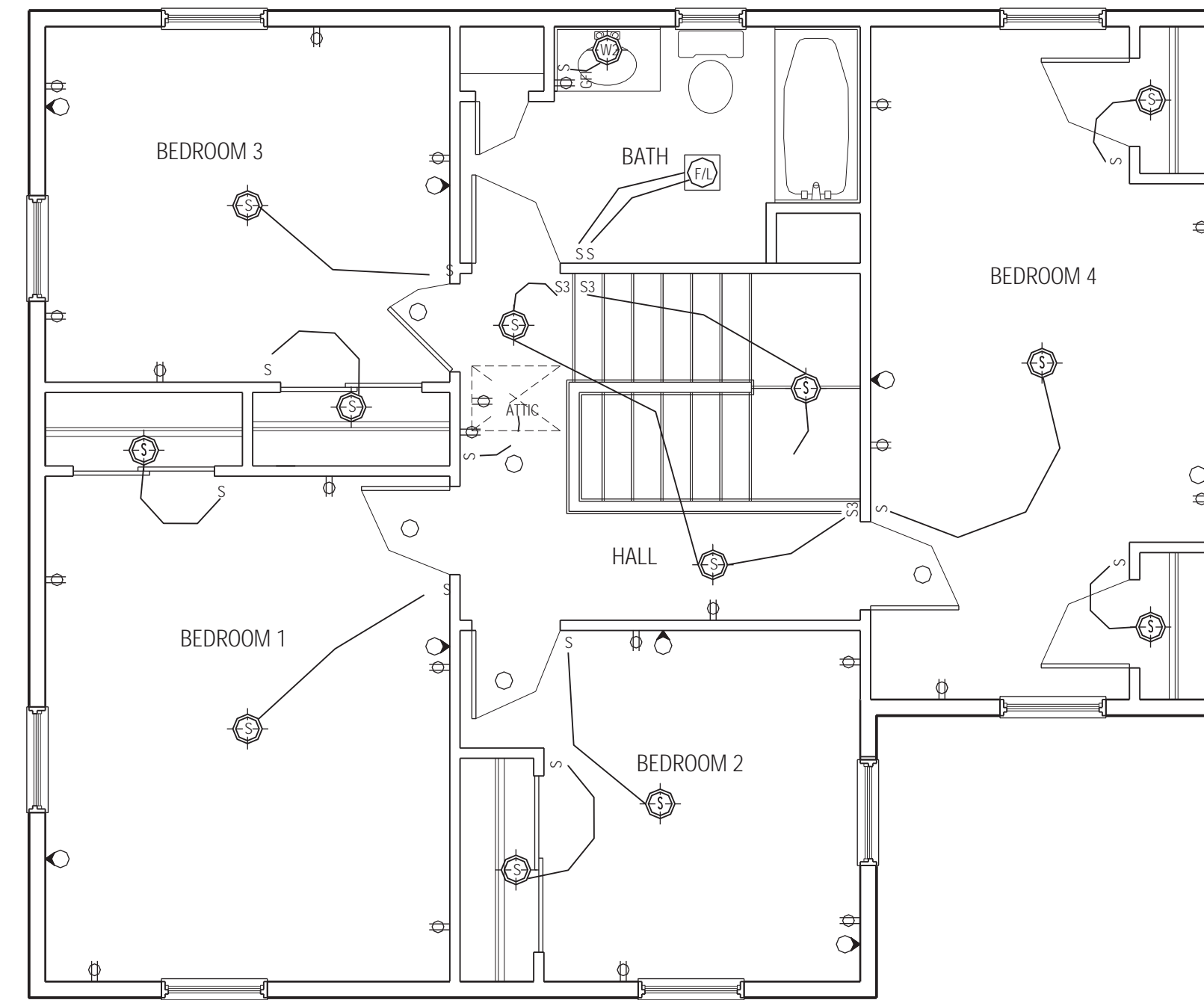


2 FIRST FLOOR ELECTRICAL PLAN
SCALE 1/4" = 1'-0"



1 SECOND FLOOR ELECTRICAL PLAN
SCALE 1/4" = 1'-0"

ELECTRICAL LEGEND	
(S)	SURFACE MOUNTED LIGHT FIXTURE
(WP)	WALL MOUNTED LIGHT FIXTURE (EXTERIOR)
(W)	WALL MOUNTED LIGHT FIXTURE (INTERIOR)
(R)	RECESSED LIGHT FIXTURE
(F)	DUAL FLOOD LIGHT W/ MOTION SENSOR
(D)	DROPPED FIXTURE
(FA)	"PANASONIC" WHISPERLITE 70FV-07VOL
(DB)	DOOR BELL
(C)	CABLE TV JACK
(T)	TELEPHONE JACK
(SD)	SMOKE DETECTOR (HARDWIRED W/ BATTERY BACKUP)
(D)	110 VAC DUPLEX
(D)	110 VAC DUPLEX (BOTTOM SWITCHED)
(D/GFI)	110 VAC GROUND FAULT INTERCEPT
(D/WP)	110 VAC WEATHER PROOF (GROUND FAULT PROTECTED)
(S)	LIGHT SWITCH
(S3)	3 WAY LIGHT SWITCH

- NOTES
1. ALL OUTLETS AND LIGHTS IN EXTERIOR WALLS AND THE SECOND FLOOR CEILING TO HAVE AIRTIGHT ELECTRICAL BOXES
 2. ALL SWITCHED OUTLETS TO BE BOTTOM OF DUPLEX OUTLET
 3. RECEPTACLE OUTLETS TO BE MINIMUM OF 12'-0" OC ALONG WALLS OF ALL HABITABLE ROOMS
 4. ALL KITCHEN COUNTERTOPS WIDER THAN 12" TO HAVE PROTECTED OUTLETS A MINIMUM OF 24" OC
 5. A MINIMUM OF (2) 20 AMP SMALL APPLIANCE BRANCH CIRCUITS IN KITCHEN, PANTRY, DINING ROOM, OR SIMILAR AREA (MAX 3 OUTLETS PER CIRCUIT)
 6. A MAXIMUM (8) OUTLETS PER 15 AMP BRANCH CIRCUIT AND 10 OUTLETS PER 20 AMP BRANCH CIRCUIT
 7. ALL LIGHT FIXTURES IN CLOSETS TO COMPLY WITH ARTICLE 410-8, NEC
 8. OUTLET IS REQUIRED WITHIN 4" OF DOOR OPENING ON END OF WALL AS PER ARTICLE 210-529 NEC
 9. AN "UFER" GROUND IS REQUIRED AS A PART OF THE GROUNDING ELECTRODE SYSTEM. THIS GROUND CONSISTS OF A MINIMUM 20' LENGTH OF ELECTRICALLY CONDUCTIVE #4 REINFORCING BAR ENCASED BY AT LEAST 2" OF CONCRETE AND LOCATED NEAR THE BOTTOM OF A CONCRETE FOUNDATION OR FOOTING THAT IS IN DIRECT CONTACT WITH THE EARTH.



1/22/01 SUBMITTED FOR REVIEW

**BUILDING SCIENCE CORPORATION
AND BETSY PETTIT ARCHITECTS**
70 MAIN STREET WESTFORD, MASSACHUSETTS 01886
P: 978-589-5100 F: 978-589-5103

HABITAT FOR HUMANITY
METRO DENVER
13TH AVENUE AND NELSON STREET, LAKE WOOD CO

ELECTRICAL PLAN
FIRST & SECOND FLOOR
HOUSE 2
SCALE AS NOTED

COPYRIGHT © 2001
BUILDING SCIENCE CORPORATION

E-1

FILE: HF METRO CORR DEMONSTRATION.dwg