

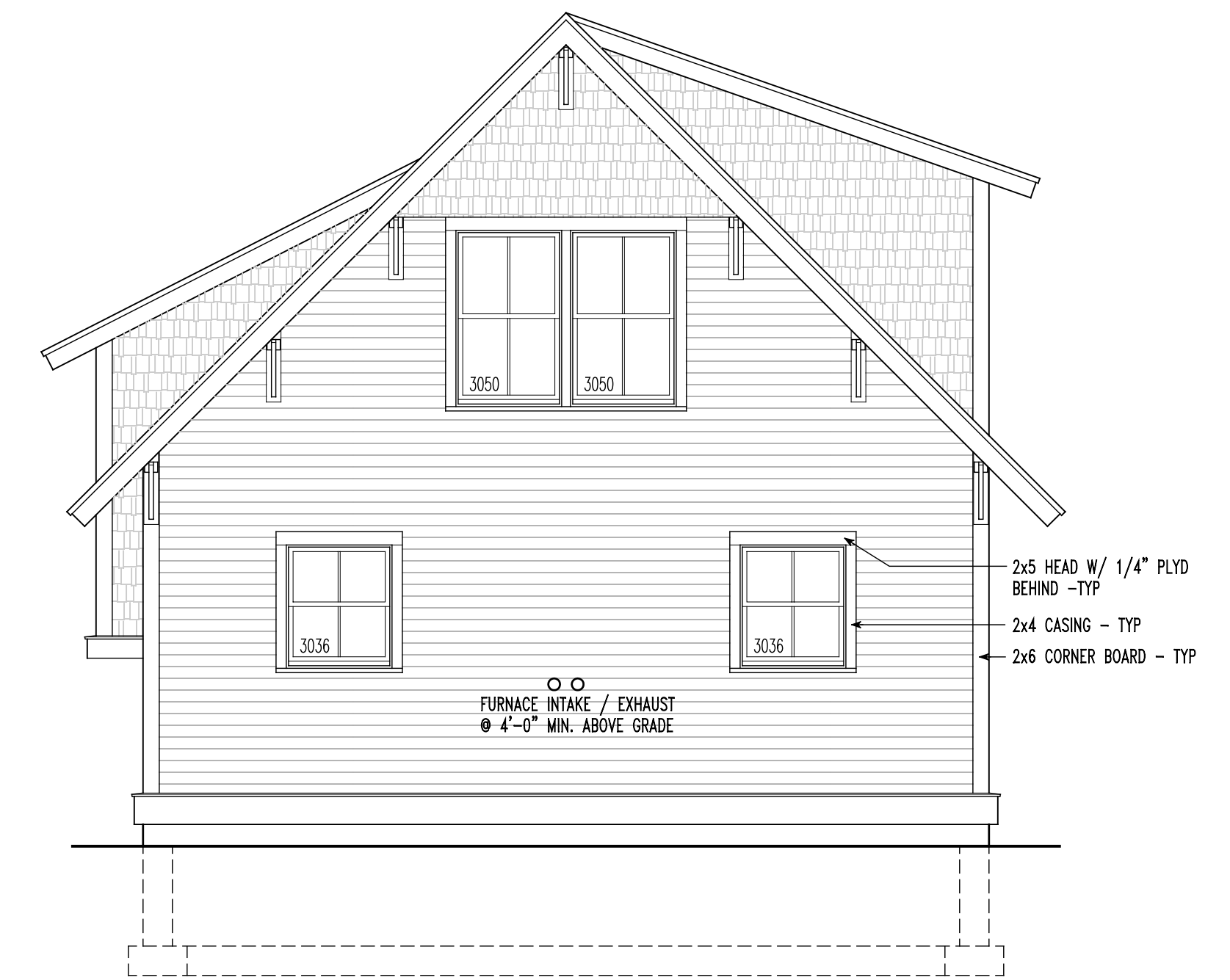
4 | LEFT SIDE ELEVATION (EAST)
SCALE 1/4" = 1'-0"



2 | FRONT ELEVATION (NORTH)
SCALE 1/4" = 1'-0"



3 | RIGHT SIDE ELEVATION (WEST)
SCALE 1/4" = 1'-0"



1 | REAR ELEVATION (SOUTH)
SCALE 1/4" = 1'-0"

11/3/04 SUBMITTED FOR REVIEW

PROJECT: **BUILDING SCIENCE CORPORATION**
WESTFORD, MASSACHUSETTS 01886 PH: 978-689-5100
70 MAIN STREET

LOT 46 - 36 GAMBEL OAK WAY
BLUE CREEK RANCH
CARBONDALE COLORADO

BUILDING ELEVATIONS
SCALE AS NOTED

COPYRIGHT © 2004
BUILDING SCIENCE CORPORATION

A-4

FILE: BP_CD_sr-CO.DWG

