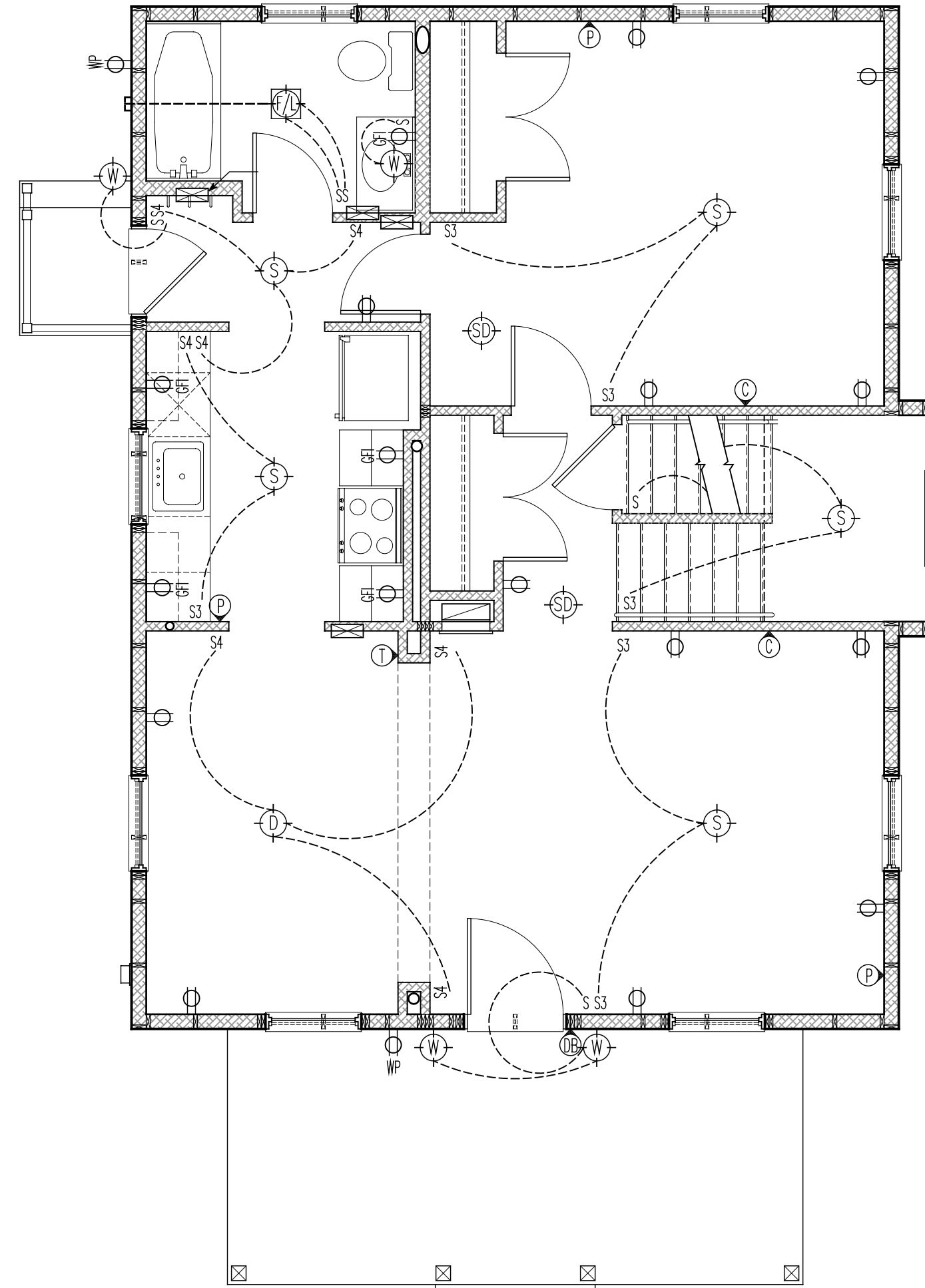
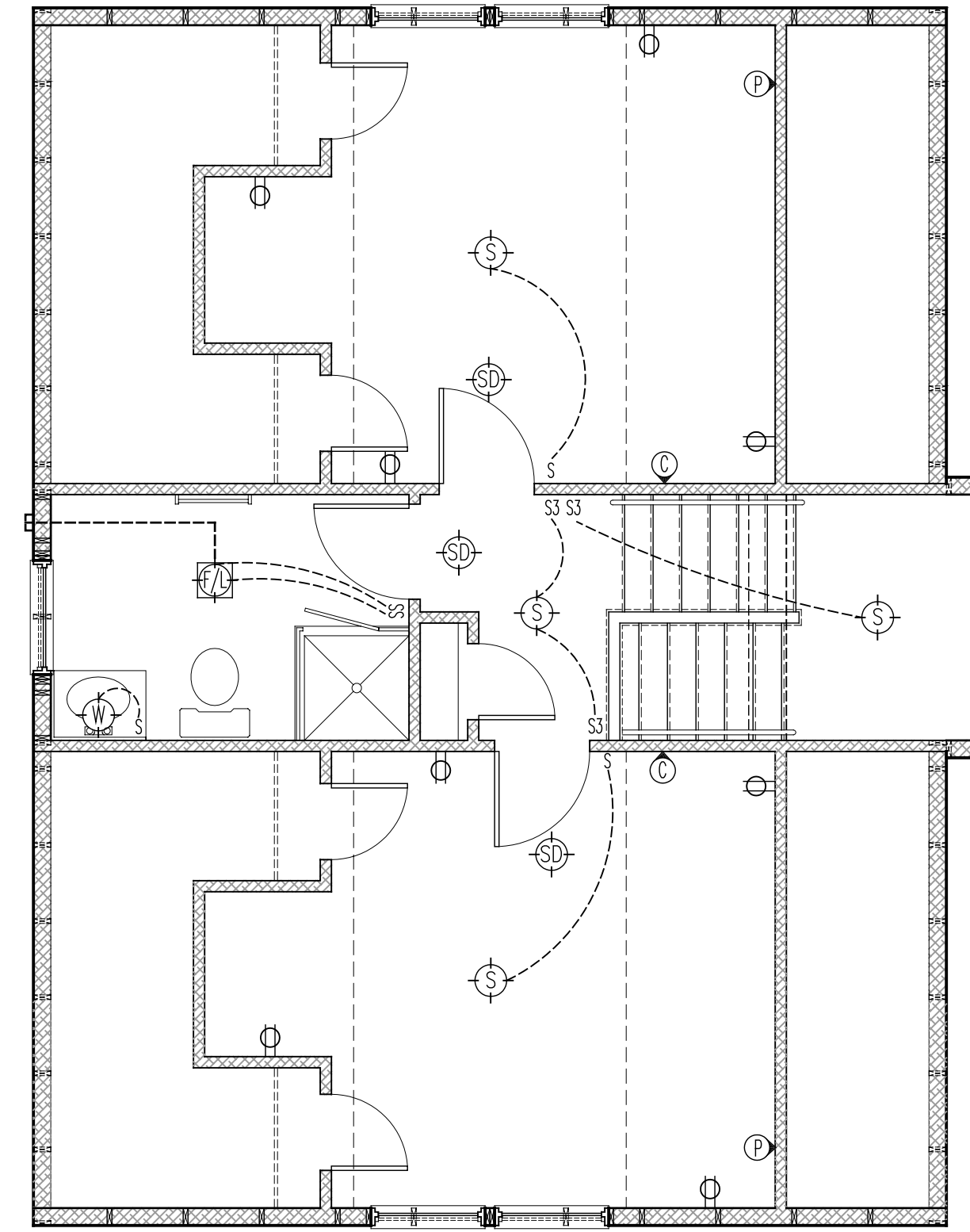


3 | BSMT ELECTRICAL PLAN
1/4"=1'-0"



2 | FIRST FLOOR ELECTRICAL PLAN
1/4"=1'-0"



1 | SECOND FLOOR ELECTRICAL PLAN
1/4"=1'-0"

SYMBOL	DESCRIPTION
	SURFACE MOUNTED LIGHT FIXTURE
	WALL MOUNTED LIGHT FIXTURE
	DROPPED LIGHT FIXTURE
	RECESSED LIGHT FIXTURE
	RECESSED LIGHT FIXTURE (AIRTIGHT)
	RECESSED LIGHT FIXTURE (WATERPROOF)
	POLE LAMP (EXTERIOR-SITE)
	FLOOD W/MOTION SENSOR
	SMOKE DETECTOR (INTERCONNECTED W/ BATTERY BACKUP)
	EXHAUST FAN
	EXHAUST FAN / LIGHT COMBINATION
	(24) FLOURESCENT STRIP LIGHT (SINGLE) (LENGTH IN INCHES)
	(24) FLOURESCENT STRIP LIGHT (DOUBLE) (LENGTH IN INCHES)
	(24) TRACK LIGHT (LENGTH IN INCHES)
	CABLE TV
	PHONE
	DOOR BELL
	THERMOSTAT
	110 VAC DUPLEX OUTLET
	110 VAC DUPLEX OUTLET (TOP SWITCHED)
	110 VAC DUPLEX OUTLET (GROUND FAULT INTERRUPTOR)
	110 VAC DUPLEX OUTLET (WATERPROOF)
	S SINGLE POLE SWITCH
	S3 THREE-WAY SWITCH
	S4 FOUR-WAY SWITCH
	S0 SWITCH WITH DIMMER
	S03 THREE-WAY SWITCH WITH DIMMER
	S04 FOUR-WAY SWITCH WITH DIMMER
	S1 SWITCH WITH TIMER
	CEILING FAN
	CEILING FAN/LIGHT COMBINATION

NOTE: ALL SYMBOLS MAY NOT BE USED IN PLAN

