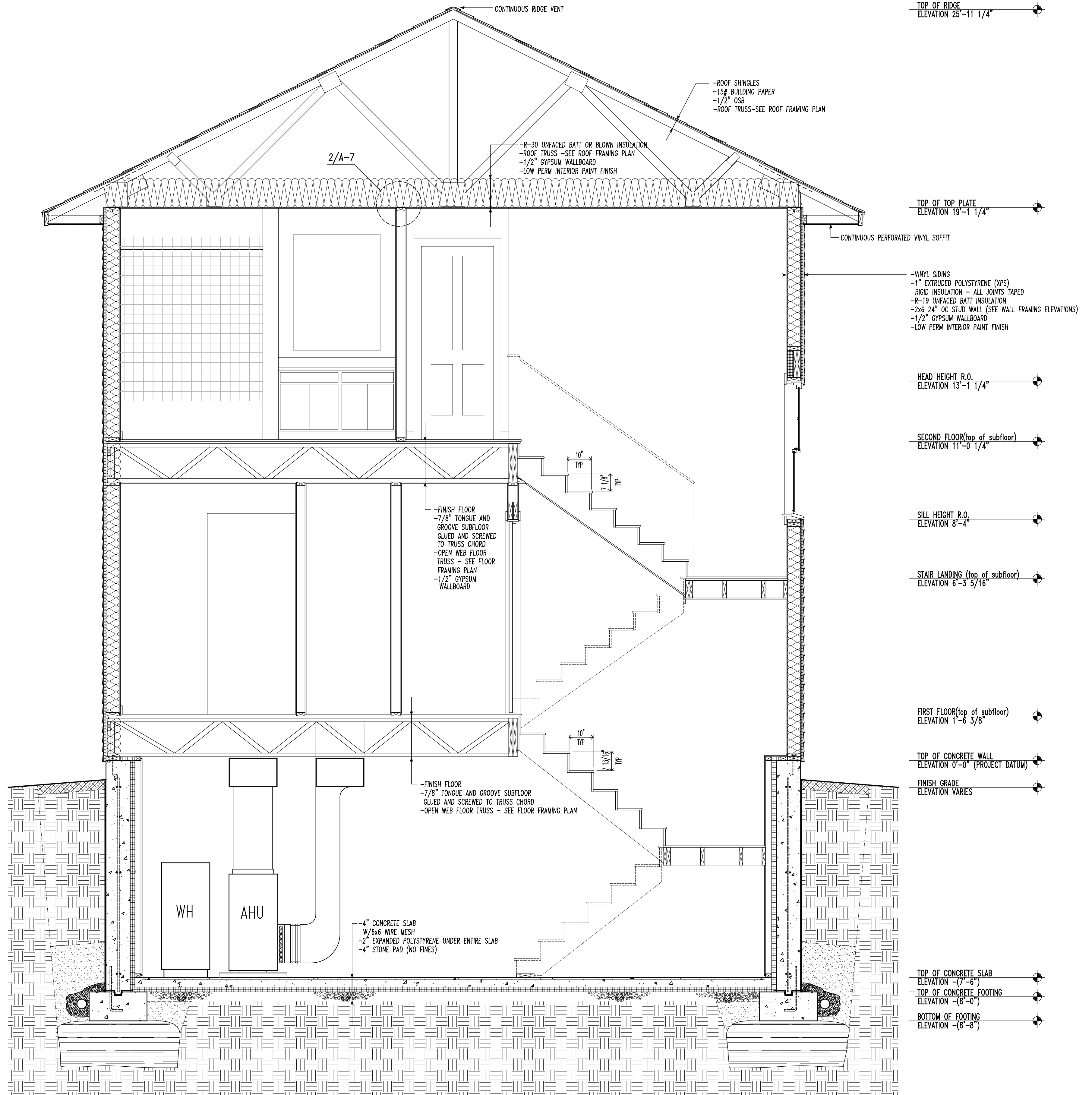


1. A - INSTALL ADHESIVE MEMBRANE STRIP AT WINDOW SILL
B - FOLD ENDS AT JAMBS
C - ENSURE MEMBRANE EXTENDS MINIMUM OF 6" BEYOND JAMB ON EXTERIOR FACE OF WALL
D - ENSURE MEMBRANE EXTENDS MINIMUM OF 6" BELOW SILL ON EXTERIOR FACE OF WALL
 2. A - INSTALL ADHESIVE MEMBRANE STRIP AT WINDOW JAMB
B - LAP JAMB MEMBRANE OVER UPTURNED SILL MEMBRANE
C - ENSURE MEMBRANE EXTENDS MINIMUM OF 6" BEYOND JAMB ON EXTERIOR FACE OF WALL
D - ENSURE MEMBRANE EXTENDS MINIMUM OF 6" BELOW SILL AND ABOVE HEAD ON EXTERIOR FACE OF WALL
 3. A - ENSURE A CONTINUOUS BEAD OF SEALANT IS APPLIED TO BACK SIDE OF NAILING FLANGE OF WINDOW ON EXTERIOR FACE OF WALL
B - INSTALL WINDOW (ACCORDING TO MANUFACTURER'S SPECIFICATIONS)
 4. A - INSTALL HEAD FLASHING
B - ENSURE HEAD FLASHING IS AT LEAST AS WIDE AS WINDOW UNIT
 5. A - INSTALL ADHESIVE MEMBRANE STRIP AT WINDOW HEAD FLASHING
B - ENSURE MEMBRANE EXTENDS ABOVE JAMB MEMBRANES
C - ENSURE MEMBRANE EXTENDS BEYOND JAMB FLASHINGS
D - ENSURE MEMBRANE LAPS HEAD FLASHING MINIMUM 2"
- GENERAL NOTES
A - ENSURE ALL SURFACES TO RECEIVE MEMBRANE FLASHING ARE CLEAN AND DRY
B - ENSURE MEMBRANE IS WELL SEATED AGAINST EXTERIOR SHEATHING - EXERCISE CARE SO AS TO REDUCE ANY UNEEDED WRINKLES IN APPLIED MEMBRANES



3/23/01 SUBMITTED FOR REVIEW
4/18/01 SUBMITTED FOR REVIEW

BUILDING SCIENCE CORPORATION
70 MAIN STREET WESTFORD, MASSACHUSETTS 01886
P: 978-589-5100 F: 978-589-5103

CLEVELAND INFILL PROTOTYPE HOUSE
GREEN BUILT HOMES, LTD
2324 LAKESIDE AVE. CLEVELAND OHIO 44114

BUILDING SECTION BB

SCALE AS NOTED

COPYRIGHT © 2001
BUILDING SCIENCE CORPORATION

A-7

FILE: GB_1608_09H3(cd)